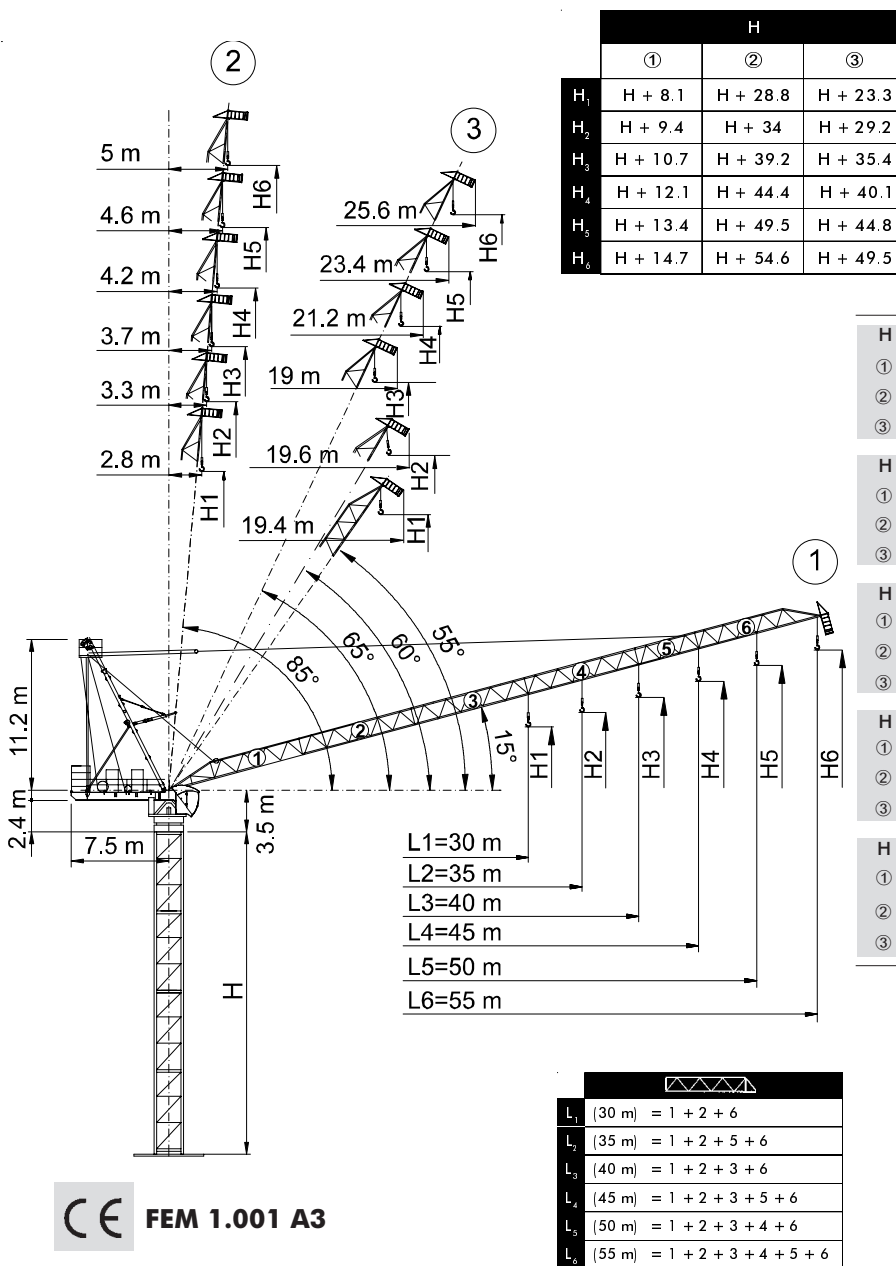




- Gru a torre a braccio impennabile
- Luffing Jib Tower Crane • Grue à tour à flèche relevable
- Turmdrehkran mit Steilstellung-Ausleger
- Grúa torre de pluma abatible



- H Altezza torre **I**
- ① Sbraccio massimo
- ② Sbraccio minimo in servizio
- ③ Sbraccio minimo in fuori servizio
- H Tower height **GB**
- ① Maximum jib
- ② Minimum jib (in service)
- ③ Minimum jib (out of service)
- H Hauteur mât **F**
- ① Portée maxi.
- ② Portée min. en service
- ③ Portée min. hors service
- H Turmhöhe **D**
- ① Max. Ausleger
- ② Mindest. Ausleger in Betrieb
- ③ Mindest. Ausleger außer Betrieb
- H Altura torre **E**
- ① Pluma maxima
- ② Pluma minima en servicio
- ③ Pluma minima fuera de servicio

CE FEM 1.001 A3

THE ULTIMATE CRANE™

Dati illustrativi non impegnativi
Con riserva di modifica senza preavviso

Specifications and data not binding
Subject to modification without notice

Données techniques seulement indicatives
Modifications réservées sans préavis

Angaben und Beschreibung unverbindlich
Änderungen vorbehalten ohne weitere Mitteilung

Dibuyos y datos sin compromiso
Modificaciones reservadas sin preaviso

UTEDOC.REV.001

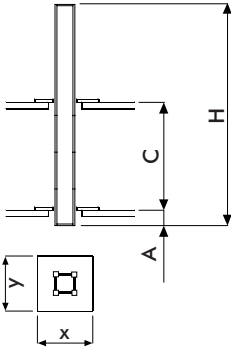
CTL 180-16 H20

Diagramma di portata **I** **Courbes de charges** **F** **Curvas de cargas** **E**
Load Diagram **GB** **Lastkurven** **D**

CTL 180-16											
		m	15	20	25	30	35	40	45	50	55
	- 25.5	m	8.00	8.00	8.00	6.33	4.97	3.95	3.15	2.52	2.00
	- 28.6	m	8.00	8.00	8.00	7.46	5.90	4.73	3.82	3.10	
	- 20.5	m	12.00	12.00	9.19	7.06	5.54	4.40	3.51	2.80	
	- 29.70	m	8.00	8.00	8.00	7.90	6.31	5.12	4.20		
	- 21.2	m	12.00	12.00	9.70	7.53	5.97	4.80	3.90		
	- 29.3	m	8.00	8.00	8.00	7.75	6.18	5.00	*		
	- 22.0	m	12.00	12.00	10.19	7.97	6.38	5.20			
	- 17.1	m	16.00	13.26	9.96	7.75	6.18	5.00			
	- 29.8	m	8.00	8.00	8.00	7.95	6.40	*			
	- 22.2	m	12.00	12.00	10.34	8.16	6.60				
	- 17.2	m	16.00	13.37	10.12	7.95	6.40				
	- 30.0	m	8.00	8.00	8.00	8.00					
	- 22.9	m	12.00	12.00	10.81	8.60					
	- 17.7	m	16.00	13.91	10.60	8.40					

* = + 500 kg [- 35 m - 40 m] **i**

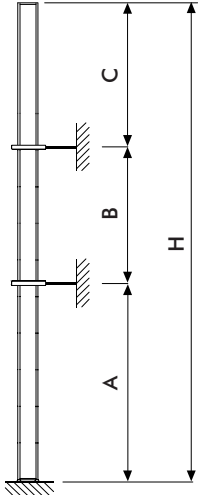
Altre installazioni **I** **Autres implantations** **F** **Otras implantaciones** **E**
Other configurations **GB** **Aufstellmöglichkeiten** **D**



i

Gru climbing
 Bottom climbing crane
 Télescopage sur dalles
 Kletterkran im Gebäude
 Grúa trepadora

I
GB
F
D
E



i

Gru ancorata
 Crane tied to the structure
 Grue ancrée
 Geankerter Kran
 Grúa anclada

I
GB
F
D
E

H 20													
[m]													
		L ₁	L ₂₋₃	L ₄₋₅	L ₆	L ₁	L ₂₋₃	L ₄₋₅	L ₆	L ₁	L ₂₋₃	L ₄₋₅	L ₆
C_{min}		14				12				10			
H_{max}		48.75	45	41.25	37.5	45	41.25	37.5	33.75	33.75	30	30	26.25
A_{min}		1											
x		2.6											
y		2.08											

H20 R4					
[m]					
		L ₁	L ₂₋₃	L ₄₋₅	L ₆
A_{min/max}		25/42	25/40	25/36	25/33
B_{min/max}		18.75/22.5	18.75/22.5	18.75/22.5	18.75/22.5
C_{max}		34	31	28	25
H_{max}		i			

Torre
Tower

I
GB

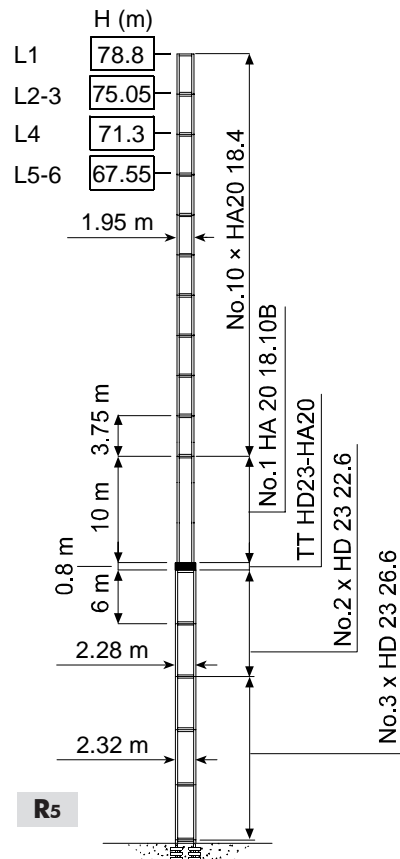
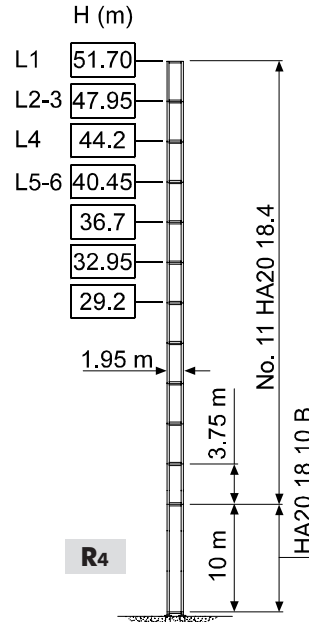
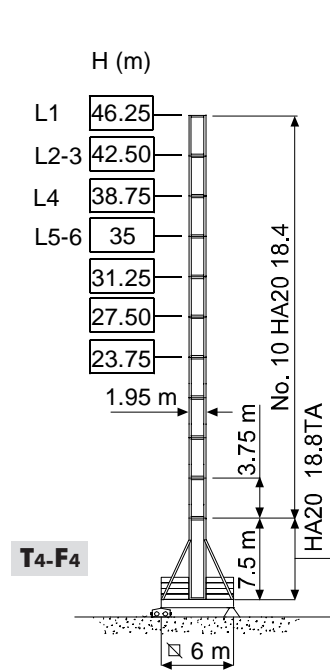
Tour
Turm

F
D

Torre

E

H20



H	Altezza torre	I
H	Tower height	GB
H	Hauteur mât	F
H	Turmhöhe	D
H	Altura torre	E

	45 AFC 80 67 AFC 80	125 kVA 150 kVA	400 V - 50 Hz / 460 V - 60 Hz 2000/14/CE

		m/min	f	kW	
45 AFC 80 R00 45 AFC 80 R01		0 ⇨ 30	8	45	560 m (R00) 850 m (R01)
		0 ⇨ 39	6		
		0 ⇨ 56	4		
		0 ⇨ 97	2		
		0 ⇨ 110	1.7		
		0 ⇨ 20	12		
		0 ⇨ 26	9		
		0 ⇨ 37	6		
		0 ⇨ 64.5	3		
		0 ⇨ 73.5	2.55		
		0 ⇨ 15	16		
		0 ⇨ 19.5	12		
		0 ⇨ 28	8		
		0 ⇨ 48.5	4		
		0 ⇨ 55	3.4		
67 AFC 80 R00 67 AFC 80 R01		0 ⇨ 41	8	67	560 m (R00) 850 m (R01)
		0 ⇨ 53	6		
		0 ⇨ 76	4		
		0 ⇨ 135	2		
		0 ⇨ 145	1.85		
		0 ⇨ 27.5	12		
		0 ⇨ 35.5	9		
		0 ⇨ 50.5	6		
		0 ⇨ 90	3		
		0 ⇨ 96.5	2.78		
		0 ⇨ 20.5	16		
		0 ⇨ 26.5	12		
		0 ⇨ 38	8		
		0 ⇨ 67.5	4		
		0 ⇨ 72.5	3.7		

	LFC 45 R00 LFC 45 R01	2 min	45 kW
	SCC 2 2 100	0 ⇨ 0.75 r.p.m.	2 × 7 kW
	TSR 2RG 4M8	12 ⇨ 24 m/min	4 × 80 Nm
	i		

	I Sollevamento	GB Hoisting	F Heben	D Elevación	E Elevación de pluma
	Brandeggio	Luffing	Ausleger-Einziehen	Elevación de pluma	Orientación
	Rotazione	Slewing	Schwenken	Orientación	Traslación
	Traslazione	Travelling	Schienenfahren	Traslación	Directiva sobre el nivel acustico
	Direttiva sul livello acustico	Directive on noise level	Directive sur le niveau acoustique	Richtlinie für den Schall-Leistungspegel	Consultarnos
	Consultateci	Consult us	Nous consulter	Auf Anfrage	Potencia necesaria
	Potenza totale richiesta	Power requirements	Puissance totale nécessaire	Geforderte Stromstärke	Alimentación
	Alimentazione	Power supply	Alimentation	Stromversorgung	

Gru Comedil s.r.l.

A Terex Company
Via S. Egidio 42/A, 33074 Fontanafredda (PN) - Italy
Tel. (+39) 0434 567 311 - Telefax (+39) 0434 998631
Internet e-mail: info@comedil.com
Internet home page: www.comedil.com

Divisione Automontanti

Via Alessandrina, 25 - 20095 Cusano Milanino (MI) - Italy
Tel. (+39) 02 613 16011 - Telefax (+39) 02 613 16034
Internet e-mail: info.CBR@comedil.com